

Route plan

By car:

Navigation input:

Country: Germany

City: Frankfurt/ Main

Zip code: 60325

Street: Bettinastrasse 35-37

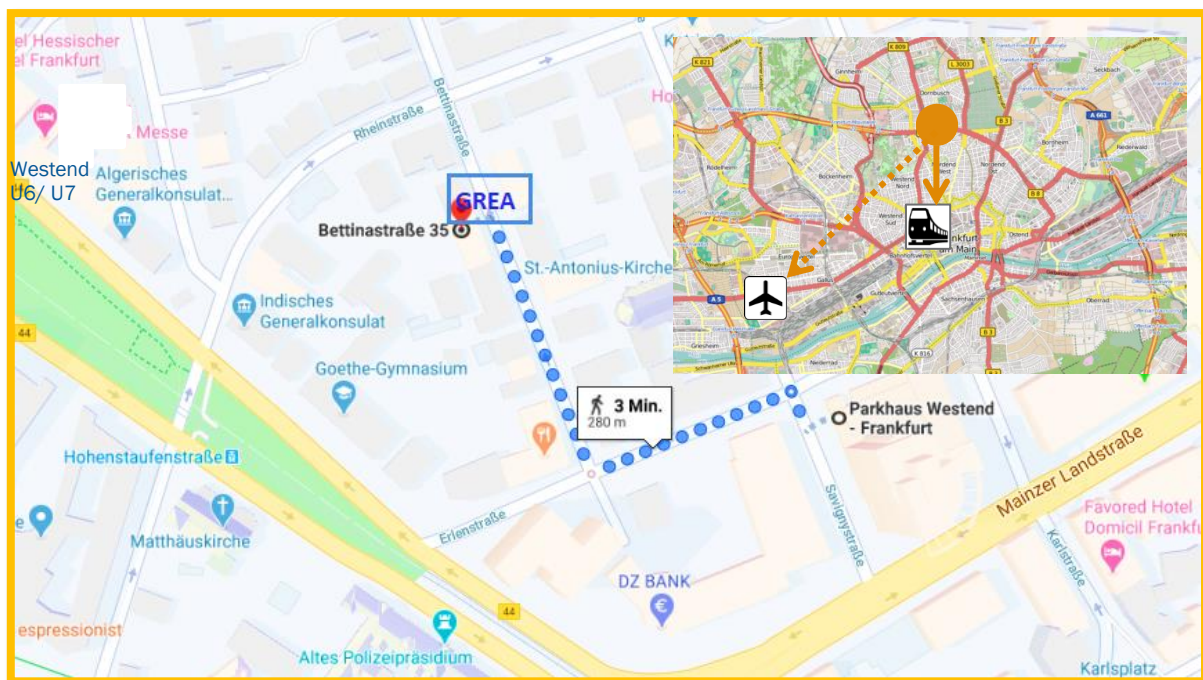


Entrance Bettinastrasse 35

Next to our office, we have a **couple of parking spots** which can be used by our visitors.

There are very few public parking spots in the close proximity of the office. Please be aware of the specially shown parking spots, which are only usable by inhabitants with valid parking permit on workdays.

The closest **car park** offers 616 parking spots (address: Savignystrasse 1, **60325 Frankfurt/ Main**) and is a 3-minute walk away from our office.



By train:

Travelling time by cab:
approx. 5 minutes (costs: approx. EUR 10–12)

Alternatively with public transport:

Use the **suburban railway lines (S1-S9) from the tracks 101/ 102** in order to get to the stop „**Hauptbahnhof**“. From there:

- By foot: approx. 10 min. Go direction Messe through the Düsseldorf Street, then cross the Mainzer Street, and walk across the two DZ Bank buildings. Just walk 250m through the Bettinastrasse and our office is there, on the left side.
- By tram: 16 or 17. Take one of these trams direction Messe to “**Hohenstaufenstrasse**”. Then take the Rheinstrasse and turn right at the next street (Bettinastrasse).
- By underground: U4 direction “**Bockenheimer Warte**” to Messe. Then take the Rheinstrasse and turn right at the next street (Bettinastrasse).



Frankfurt Hauptbahnhof

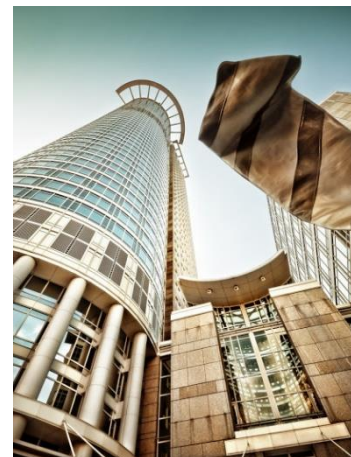
By plane:

Airport Frankfurt/ Main

Travelling time by cab:
approx. 20–25 minutes (costs: approx. EUR 30–35)

Alternatively with public transport:

Use the **suburban railway lines S8/ S9** or a **regional train from the tracks 101/ 102** in order to get to the stop „**Hauptbahnhof**“. From there you can take the trams or undergrounds above mentioned or you can just come by foot.



Westend Car park